



CUSTOM
built
integrated
EQUIPMENT



Tel. 314.267.9955
Email. info@gemcontainers.co
Web. www.gemcontainers.co



Every day
we create unique
solutions for
our clients



Welcome To GEM

GEM offers turn-key engineering, design, project management and modifications of trailers and containers for a wide range of commercial & industrial solutions.

At GEM our engineers, designers, and master modification builders make sure your container has been engineered for each geo-climate per requirements.

Bespoke solutions to fulfill your needs.

In the event you require extra office space, unique configurations, customised integration of industrial equipment, or a housing solution, the **GEM** team can assist.

Our exceptionally talented group of specialists can even develop a containerized configuration to

safely stack different containers into a multi-story building. We can make structures with both internal and external staircases, providing a functional facility with an architectural twist.

Plug and play options are ideal!

Large or small, GEM can supply the dependable, versatile, turn-key arrangement your project demands.

The modular nature of containers provides a lot of flexibility in terms of design and integration. In addition, it becomes much more feasible to

phase in footprint and/or capacity, where containers can be added in series until the desired configuration is attained.

We work with our customers every step of the way to insure all projects are designed and manufactured on time and of the highest quality.

Our success maintaining long-term relationships has been the result of careful planning and evaluation of every project we begin and deliver.

Let's talk about what we can build for you!



Table Of Contents

Welcome To GEM	03
Founder's Message	05
What We Do	06
Main Services	08
Market Trends	10
Our Projects	12

Founder's Message



Michael Mathon
Founder | President

Thank you for the opportunity to work with you in developing your project. We are pleased to offer our years of experience and professional skill sets to deliver a completely custom solution, robustly designed to meet and exceed your needs!

The difference is in the details.

We're proud to tell you that our company can offer a wide spectre of great and professional services.

With 15 years of industry experience and innovation, GEM can do it all!

We're a top notch supplier of commercial and industrial integrated containers.

With factory trained and **OSHA Certified** fabricators and mechanics, we're pleased to offer a diverse product line including standard and custom ISO containers, trailers, dry vans, reefers, and fabricated housings for industrial processes such as containerized battery energy storage systems (CBESS), electrical power generation, water treatment processes, power distribution, and UPS & switch gear lineups. Additionally, we supply products in support of jobsite & personnel processes such as storage, maintenance support, security, military, disaster and emergency preparedness, first

response, health, medical and communications.

We serve a worldwide client base.

Our worldwide client base includes end users, manufacturers, distributors, EPC's and general and sub-contractors with interests in al levels of public, private, civilian, military and government market segments.

Process-driven services such as engineering & design, manufacturing, project management, quality control, & logistics and warranty service provide support to high quality products that will deliver years of dependable service in all global environments.





“
 Designs
 of ingenuity
 that offer
 robust
 solutions &
 quality results

What We Do

GEM is a supplier of commercial and industrial equipment. Our product lines include standard and custom ISO containers, trailers, dry vans, reefers, and fabricated housings.

Our unique approach and diverse experience allows us to enclose a wide range of work and personnel processes. From containerized battery energy storage systems (CBESS) and electrical power generators, to water treatment systems, power distribution equipment and UPS & switch gear lineups, GEM is your one stop shop!

Our worldwide client base includes end users, manufacturers, EPCs, and distributors, and general & sub-

contractors with interests in all levels of public, private, civilian, military and government market segments.

GEM's product lines include standard and customized ISO containers and enclosures. Typical product applications include:

- * Power Generation
- * Energy Storage
- * Power Distribution
- * Water Treatment
- * Security Turnstiles
- * Work Boxes
- * Experimental Marketing
- * Retail Solutions
- * Microgrids
- * Mobile Offices
- * Residential Configurations

Why Shipping Containers

ISO Shipping containers are built strong and maintain their structural integrity allowing for many permutations and applications. Allowing for cutting, reinforcing, and stacking for multilevel configurations. Our design and engineering group has many years of container build experience and expertise to provide guidance through the design, engineering, and manufacturing.

- * Stacking Ability
- * Cutting and Reinforcement
- * Interior Stairs
- * Multi-level Configuration
- * Reinforced Roof & Stair Systems

ROBUST solutions



01 WORK BOXES
 GEM will design, engineer and manufacture custom storage units for construction sites, expanded operations or for custom commercial requirements.



02 ENERGY STORAGE
 End-users of electrical energy are considering battery energy storage tech that combats transmission & distribution infrastructure issues.



03 RETAIL SOLUTIONS
 Designing & engineering retail solutions is a GEM specialty. These products are custom built to fit project requirements, and can be built as permanent or temporary solutions.

&
**bespoke
 CONTAINERS**



04 WATER TREATMENT
 GEM designs, engineers and fabricates ISO containerized systems for virtually any mobile water treatment solution including process integration & disaster relief.



05 SECURITY TURNSTILES
 GEM builds portable turnstile products for any industrial or construction site requirements. These are also great for large events and private security.



06 POWER DISTRIBUTION
 Climate controlled power equipment centers are manufactured in a wide range of configurations, & can be installed in ISO containers or custom built enclosures.



Main Services

GEM's engineering department leverages their extensive industry knowledge paired with leading CAD solutions to facilitate complex design and engineering tasks.

- * Component Selection
- * Misc. Structures:
 - Walkways
 - Platforms
 - Mezzanines
 - Canopies
- * And More!

In addition to the in-house services we provide, GEM also has an extensive network of professionally-licensed Engineers in all 50 States.

We look forward to working

with you in developing your customized container project!

Contact us today to schedule your discovery meeting & kickstart your project the GEM way!

The department employs degreed mechanical engineers. This team's experience includes a wide array of projects over a 20 year history delivering elegant solutions to complex challenges for a variety of global companies.

Engineering services are available in the following areas:

- * ISO Container Structural Mods
- * MEP Integrations
- * Fire Protection Systs
- * Structural Component Design
- * Space Allocation Studies

 Service 1 Design & Engineering	 Service 2 Container Modifications	 Service 3 Equipment Reconditioning	 Service 4 Genset Packaging
 Service 5 Space Allocation Analysis	 Service 6 Renewable Microgrids	 Service 7 Painting & Coatings	 Service 8 Dustless Blasting



15 Years of Industry Excellence

GEM
has its headquarters in
MIAMI
&
offices & representatives in
CHICAGO, IL
PEORIA, IL
ST. LOUIS, MO



Market Trends

Built To Last

Shipping containers are designed to withstand the harsh conditions experienced at sea. As such they are extremely durable and completely weatherproof. With proper design, material selection and maintenance protocols, containers will last 20 years or longer!

A great investment with a small footprint and long operational lifecycle.

U.S. Container Market

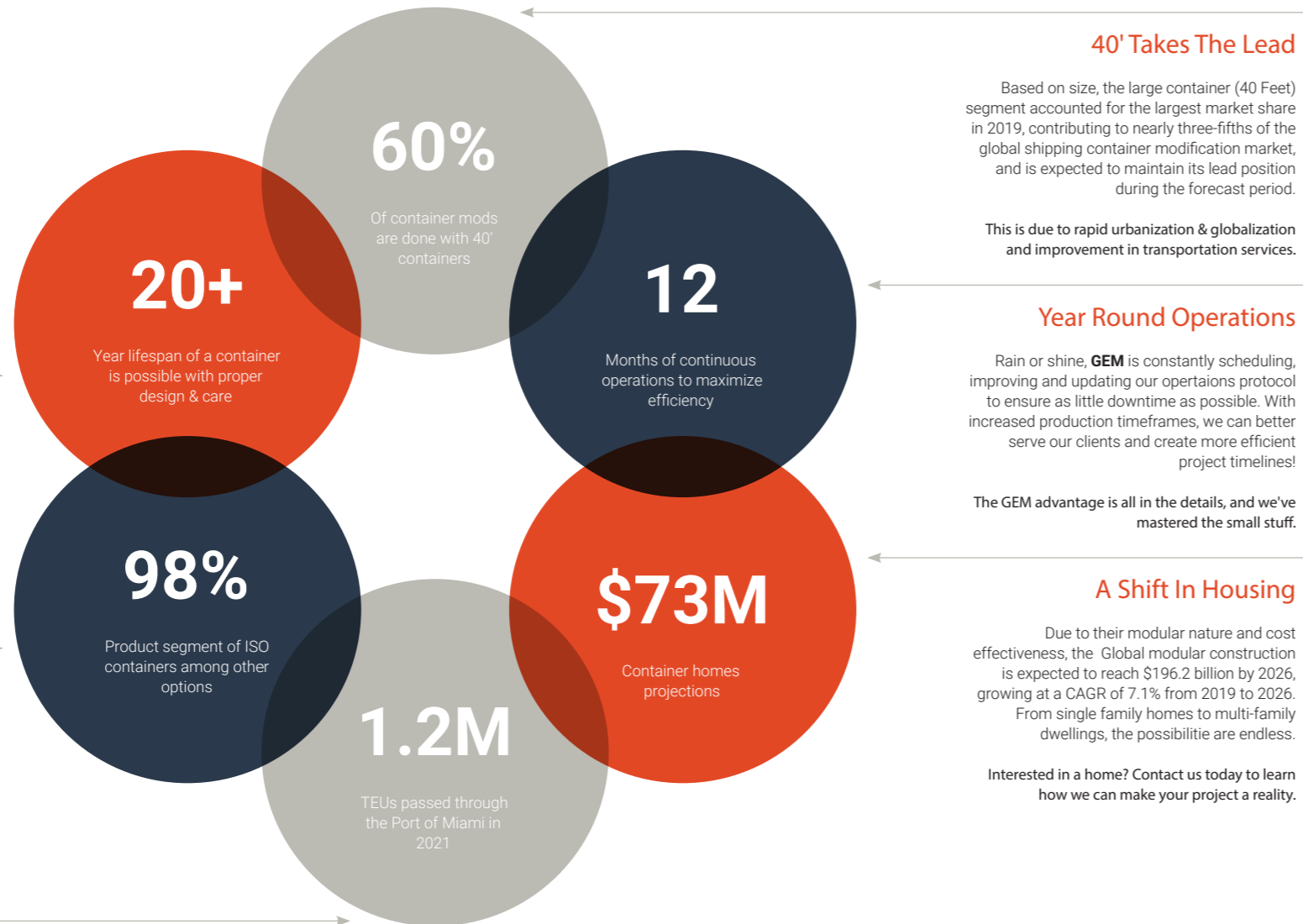
The market of containers is split into 4 categories: Dry Containers, Reefers, Tank Containers & Other. 98% is occupied by ISO containers, the standard used for universal cargo transportation.

The extensive utilization of ISO containers for international trade attributes to its high market share through 2020.

A Strategic Location

As one of the busiest ports in North America, GEM is strategically located to take advantage of the massive number of containers passing through South Florida's waterways each year. From 10', 20' and 40' units to High Cubes, we have you covered.

Our connective network keeps a steady supply of containers to fulfill our clients' needs.



40' Takes The Lead

Based on size, the large container (40 Feet) segment accounted for the largest market share in 2019, contributing to nearly three-fifths of the global shipping container modification market, and is expected to maintain its lead position during the forecast period.

This is due to rapid urbanization & globalization and improvement in transportation services.

Year Round Operations

Rain or shine, GEM is constantly scheduling, improving and updating our operations protocol to ensure as little downtime as possible. With increased production timeframes, we can better serve our clients and create more efficient project timelines!

The GEM advantage is all in the details, and we've mastered the small stuff.

A Shift In Housing

Due to their modular nature and cost effectiveness, the Global modular construction is expected to reach \$196.2 billion by 2026, growing at a CAGR of 7.1% from 2019 to 2026. From single family homes to multi-family dwellings, the possibilities are endless.

Interested in a home? Contact us today to learn how we can make your project a reality.

North American Dominance

Based on region, North America contributed to the largest share in terms of revenue in 2019, holding nearly two-fifths of the global shipping container modification market, and is projected to continue its dominance by 2027. This is attributed to increase in construction-related activities and rise in housing requirements.



Global Market Trends

The global shipping container modification market is expected to reach \$114.5B by 2027, up from \$76.5B in 2019. The CAGR (Continued Annual Growth Rate) between 2020 to 2027 is estimated at 6.6%. A rise in the need for the protection of architecture from environmental impacts, rise in government focus on green building concepts, the need for shipping container space constraints and compact shipping containers in large cities, are anticipated to drive the growth of modified shipping containers. In addition, a rise in focus toward affordable housing structures has boosted the need since containers are portable, quicker to build, and easy to relocate! (www.alliedmarketresearch.com).

40FT

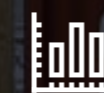
A Growing Segment

The 40' container segment is expected to be the most influencing segment growing in the global shipping container modification market.

6.6%

CAGR | 2020-2027

This has massive implications for the container space as we start to vertically integrate into housing, retail, storage, and beyond!



The Benefits of Containers

Shipping containers are considered an IDEAL BUILDING MATERIAL because they are durable, stackable, cuttable, movable, plentiful and relatively cheap in comparison to virgin construction methods. There are roughly 20 MILLION containers circling the globe at this moment.



GET THE
GEM
advantage



Our Projects Around The World

Connecting solutions
for clients around
the world is the GEM
advantage!

When it comes to
manufacturing custom
projects and solutions,
you want to avoid having
to work between multiple
organizations, different time
zones and unseen variables.

GEM eliminates those
variables by providing a
full range of services all
managed under one roof.
From in house engineering
to purchasing, fabrication
and logistics planning, all of
your needs are covered.

We've worked clients in
the United States, South
America, the Caribbean and
even as far as the Middle
East.

Transport Your Project

International shipping provides us
access to a robust transportation
network (via sea, truck and train)
to deliver your container where it
needs to be!

Contact us today to discover
more about how we can assist in
bringing your project to fruition,
wherever it may be globally!



01

California

Evervenue is an industry leader
in energy storage, and GEM was
contracted to build them a custom
BESS (Battery Energy Storage
System) container. With bespoke
internal battery racks, integrated
ventillation ports, and amplified
entryways this project took efficiency
and sustainability to new heights.
Recently they raised \$100M to
progress their battery technology!

2018
GEM Project

02

Puerto Rico

After Hurricane Maria hit Puerto
Rico in 2017, there was a big need
to repopulate the cattle that had
perished. Collaborating with the
USDA, we custom built transport
containers to house cattle. These
robust structures included diamond
plating flooring, ventilation windows,
watering systems, and industrial
strength livestock dividers to provide
safety and durability.

2017
GEM Project

03

Tennessee

The US Department of Energy built
a specialized facility in Oak Ridge,
Tennessee to handle the decanting
of mercury, and they were looking
for modular elements to the process.
GEM stepped in and built a mobile
element to be utilized in the facility
which treats 3,000 gallons of water
per minute and includes a 2 million
gallon storage tank to collect and
treat stormwater.

2017
GEM Project

04

Colombia

The Colombian military deals with
rough terrain and wanted to ensure
it was able to effectively patrol its
borders. GEM was contracted to
design and build a self sustaining
mobile command centers that would
be inserted into remote locations.
Built with electrical packages, HVAC
systems and heavily insulated
interiors, these stations are literally a
first line of defense.

2021
GEM Project

05

Jamaica

The cannabis industry is growing
by leaps and bounds, and needs the
infrastructure to support its growth.
We worked with a Jamaican-based
company that was expanding its
operations to supply mobile offices
that could be placed on their farms
when and where needed. Built with
HVAC, power, windows and doors,
these offices offered a needed
reprieve from the heat.

2020
GEM Project

06

Afghanistan

With an ongoing military presence
in the Middle East, GEM was
contracted to design, build and
supply mobile labs for private
defense contractors. These facilities
were used for specialized chemical
testing and built to the highest
standards for durability, accessibility
and safety. Additional containers
were also provided as temporary
living quarters for troops and staff.

2015
GEM Project





THANK YOU



Tel. 314.267.9955
Email. info@gemcontainers.co
Web. www.gemcontainers.co